

IAP2 USA CVA for Equity and Inclusion Saint Paul Public Schools (SPPS) Facilities Master Planning

Tom Parent, AIA, LEED AP

Director, SPPS Facilities Dept

Anne Carroll

Former School Board/Trustee member



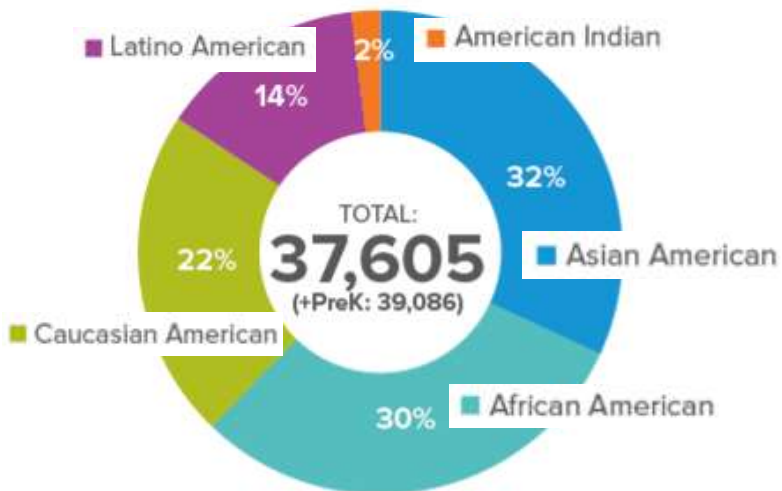
The real story...

How SPPS created an organizational culture that believes in and commits to inclusive and thoughtful stakeholder engagement as central to large-system planning efforts



SPPS Snapshot

Students:



- Students speak more than 100 languages and dialects
- 72% of students are in poverty

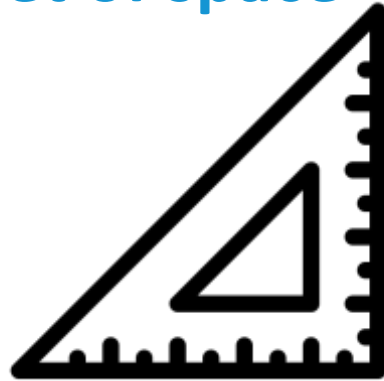


SPPS Facilities Portfolio

72 facilities



7.3 million square feet of space



465 acres of land



\$2.1 billion in assets



Evolving philosophies: Education

Uniform/industrial,
expert-based



1865



Personalized,
collaborative, inclusive



Today



Evolving philosophies: Personalized Learning



Evolving philosophies: Facilities Mgmt

Expert-based



1865



Community-based

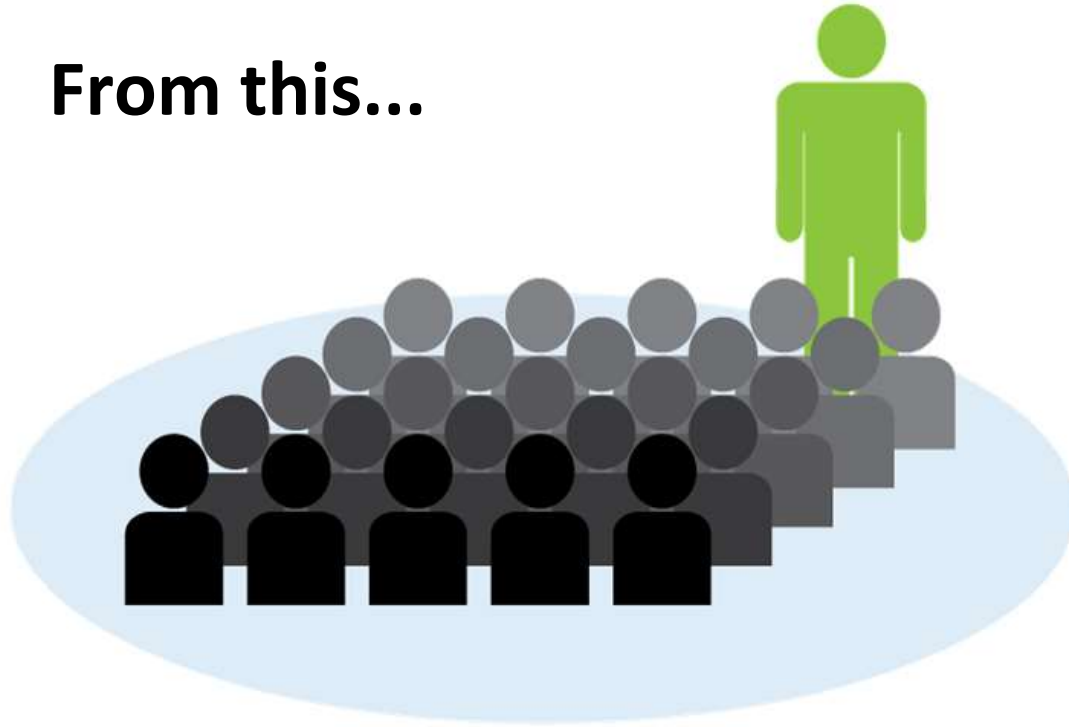


Today



Physical Environment: Design for Learning

From this...



Physical Environment: Design for Learning

...to this



Physical Environment: Design for Learning



Randolph Heights, 1960 (Minnesota Historical Society)

34 students in this classroom



Randolph Heights, 2015

26 students per class, average



Physical Environment: Design for Learning



Eastern Heights, 2015



Galtier, 2015



Eastern Heights, 2015



Eastern Heights, 2015



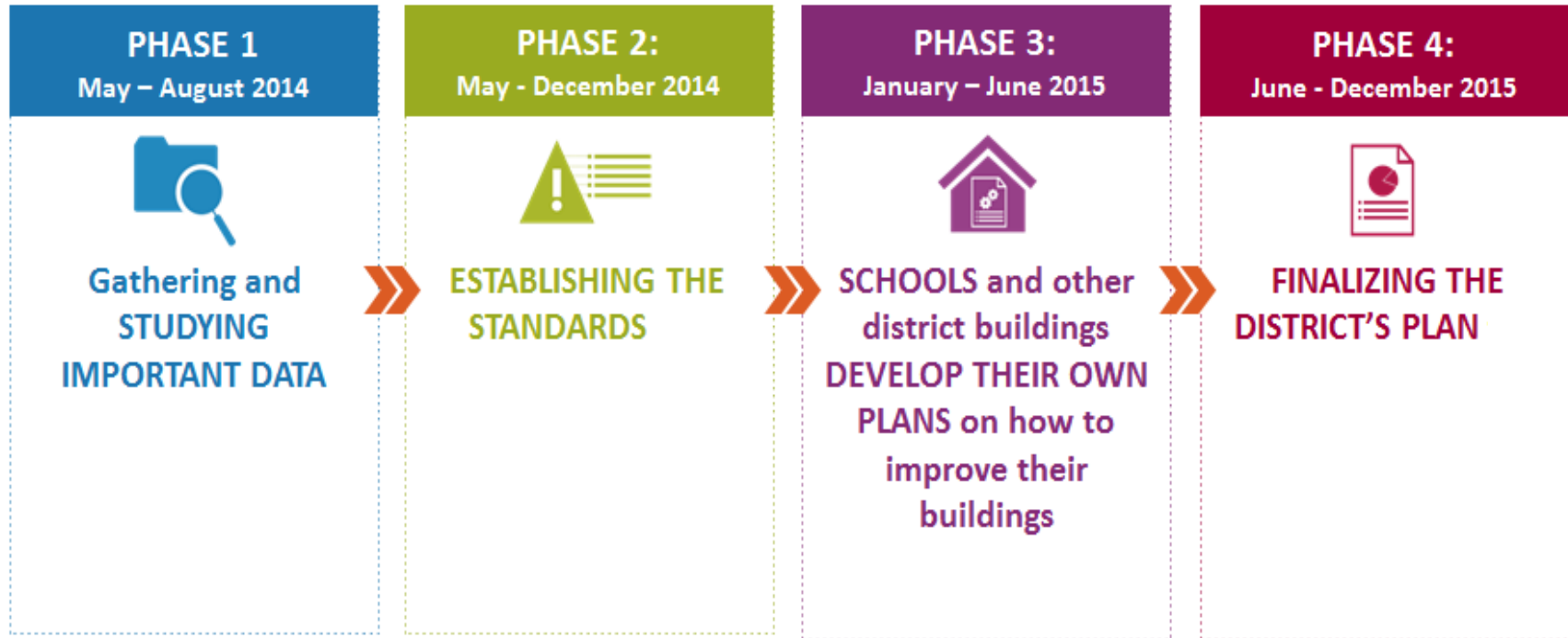
What happens when we change

- Educational expectations:
 - Personalized, flexible, collaborative
- Community expectations:
 - Participatory, inclusive, contemporary, responsive
- Required outcomes, supported by facilities:
 - Students ready for 21st century community and educational demands



Facilities Master Plan - Planning Process

May 2014 – December 2015



Phase II: Engagement Commitments

- Adopt IAP2 Core Values
- Involve key stakeholders every step of the way, ***including helping shape the process***
- Conduct authentic engagement on issues that matter to stakeholders
- Place on Spectrum: Collaborate



Phase II: Master Planning Committee

- Contributed multiple perspectives to planning process
- 60+ members selected from a wide cross section:
 - Department leaders, principals, teachers
 - Students and parents
 - Community members and key partners
- Outcomes:
 - Vision, standards, principles
 - Criteria to guide decisions



Phase III: Individual buildings, by pathway

- Each school identified intentional cross-section of stakeholders
 - Principal + head engineer
 - 4 students
 - 4 teachers
 - 4 parents
 - 2-4 community members
- Parent Advisory Committees + social networks identified missing perspectives and got the right people to the table



Phase III: Individual buildings, by pathway

- Brought on 5 partnering architecture firms
 - Explained process and Strategic Plan
 - 16-hour Racial Equity training
 - Discussion and training with cultural Parent Advisory Committees



Pathway Design Workshops

- Saturday planning workshops with all schools from a connected K-12 pathway in same room
 - Dates, times, transportation, food, child care, interpreters all planned to maximize participation
 - Build empathy across school communities
 - Demonstrate to parents, community, and staff cohesive supports for students throughout their K-12 journey
 - Understand the different articulations of principles and standards at each site



Pathway Design Workshops

Types of activities / outputs:

- **Grounding Activities** (oral & narrative)
 - “Highest Hopes”: What are your highest hopes for your school building?
 - Hierarchy of needs: What are your Top 10 priorities for your current school?
- **Design Exercises** (sketches & narrative)
 - Programmatic Alignment: How do we support programmatic focus (e.g. arts,etc) or growth
 - FMP Alignment: How do we instill the FMP Vision, Principles, and Standards in the unique culture, character and building of your school?



1. Overall FMP Outcomes

- 72 facility work scopes (550+ pages)
- Major additions to 11 buildings
- Core space (gyms/cafeterias) re-aligned to programs and capacity at 1/3 of buildings
- Increase PreK classrooms from 58 to 107



Pathway Design Workshops



"I felt as though I made a difference and had an opportunity to voice my opinions."

- Student participant

Long-Term Stakeholder Engagement

- Expectation, commitment to engagement
- Participatory and inclusive decision-making processes
- The 65-person Master Planning Committee from becomes the *conduit* for stakeholder engagement
- Long-term plans and policies provide critical context



Implementation

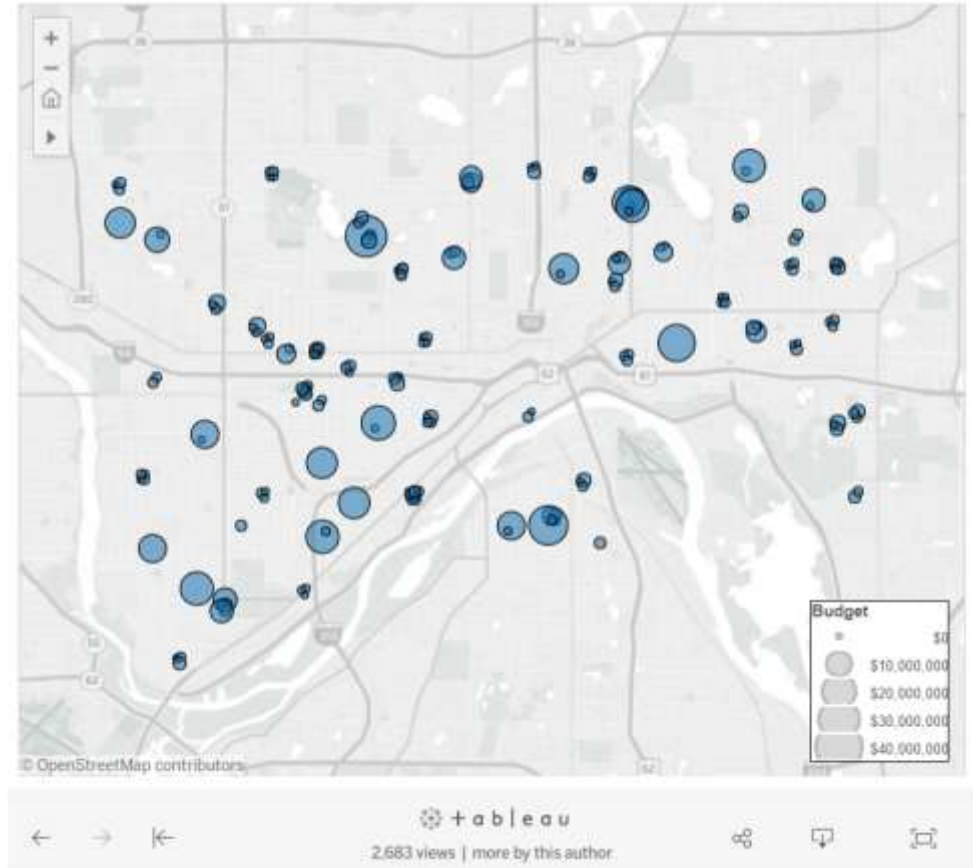
- School Board/Trustees approved \$500M in construction over next 5 years
- 2017: Restarting the Master Planning Committee to update prioritization and project plan
- Stakeholders will help shape plans as they evolve to meet changing needs



A new system

- **Governance**
 - Stakeholder-driven
 - Set funding expectations
 - Partnership-focused
- **Design**
 - Student-centered
 - Impact-focused
 - Time to develop with community

District Map - Click any project to view link to additional details



How it continues...



Facilities contact information

1-651-744-1800

facilities@spps.org

<http://facilities.spps.org/fmp>

